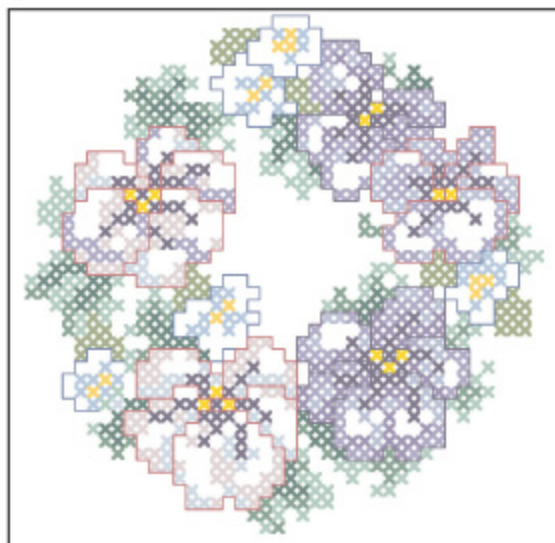


*The DMC floss used in this design can be purchased on our Janlynn.com website for 39 cents a skein.*



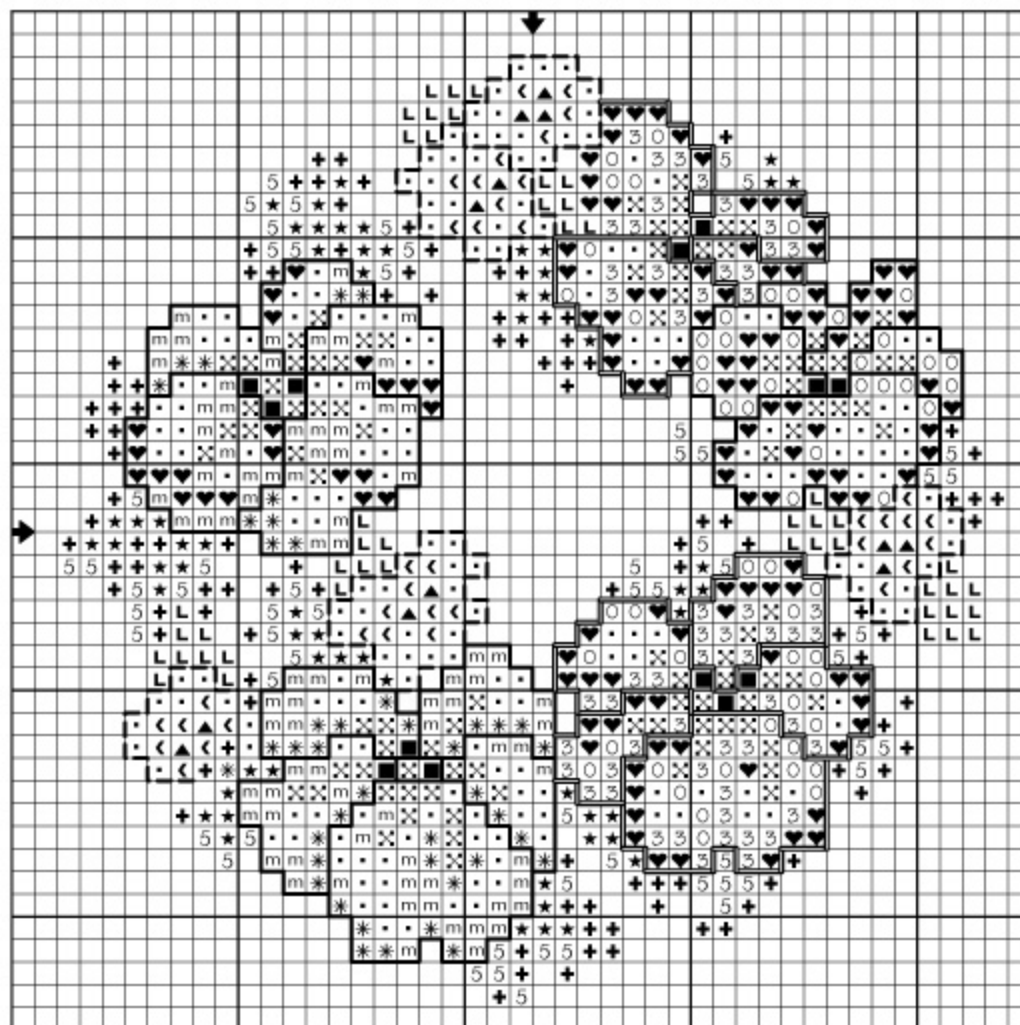
**Design Size: 42 w X 43 h stitches**    **14 / 28 count fabric**  
 11 Count, 3-3/4" w x 3-7/8" h    Cross stitch - **two ply**  
 14 Count, 3" w x 3" h    Back stitch - **one ply**  
 18 Count, 2-1/4" w x 2-3/8" h

**Cross stitch**

DMC	Color	DMC	Color
♥	340 Blue Violet-Md	◀	800 Delft Blue-Pale
○	341 Blue Violet-Lt	■	973 Canary-Brt
★	561 Jade-Vy Dk	L	3347 Yellow Green-Md
5	562 Jade-Md	m	3743 Antique Violet-Vy Lt
+	564 Jade-Vy Lt	3	3746 Blue Violet-Dk
▲	725 Topaz	*	3753 Antique Blue-Ult Vy Lt
⊗	791 Cornflower Blue-Vy Dk	•	White White

**Back stitch**

—	718 Plum
—	791 Cornflower Blue-Vy Dk
---	798 Delft Dark



This design is not to be duplicated, sold, modified or redistributed in any medium, including scanning and posting on the internet without written permission from The Janlynn Corporation.

The Janlynn Corporation 2070 Westover Road, Chicopee, MA 01022 USA  
 800-445-5565 (USA & Canada) ~ 413-206-0002 (International)  
 www.janlynn.com ~ Email: customerserv@janlynn.com